

TruePATH

Transforming Unsustainable Pathways in Agricultural Frontiers



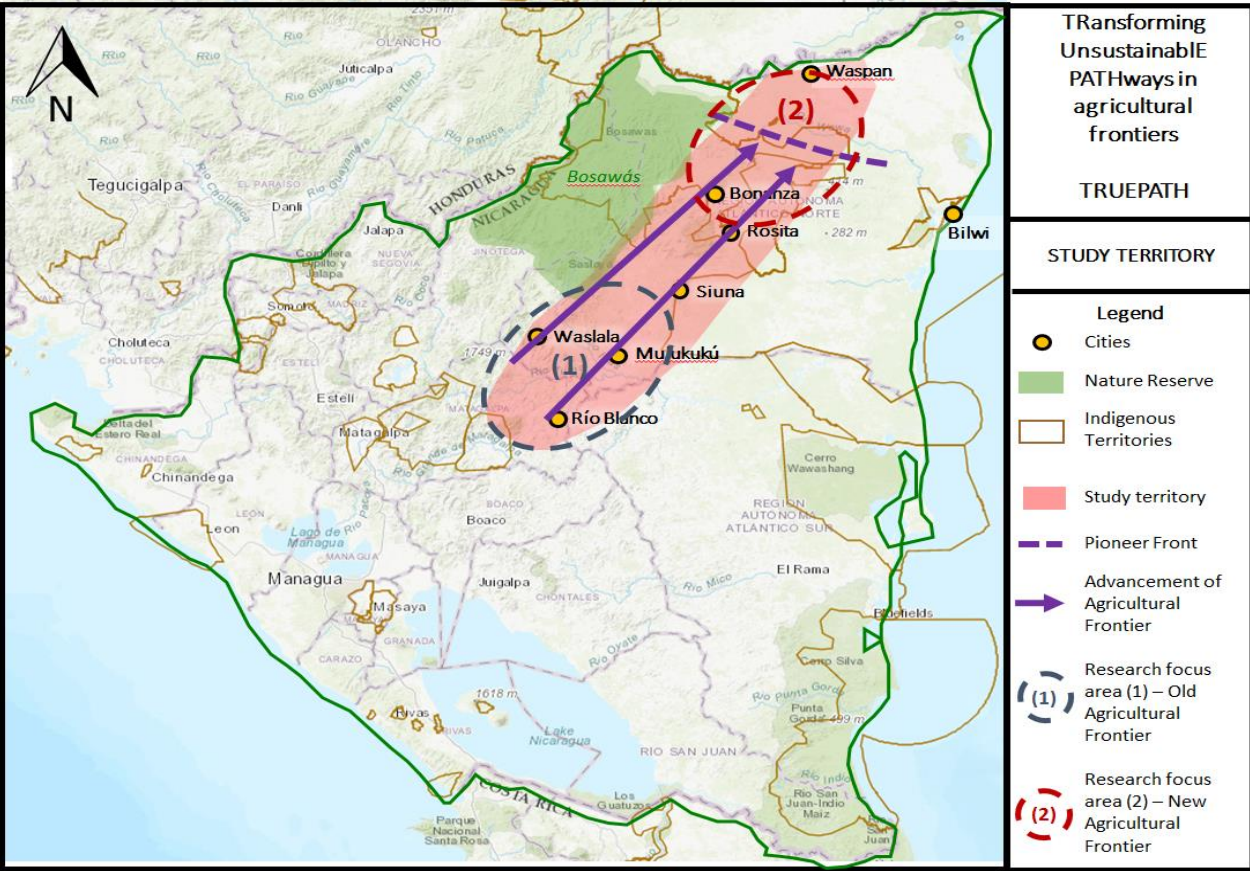
TRUEPATH
Transforming
Unsustainable PATHways
in agricultural frontiers:
articulating microfinance
plus with local
institutional change for
sustainability in Nicaragua



BELMONT
FORUM



Research context – Study territory



Objective

Through an **action-research** study in Nicaragua, we want to

- **Co-generate actionable knowledge** for the transformation of **unsustainable cattle-based development pathways** in agricultural frontiers
- Explore possible contributions of **‘Green Microfinance Plus’**.

Contributing to transformation in territorial pathways

- Development Pathway approach
 - Political and complex process
 - Broader socio-economic, political and cultural transformation needed to address concerns of social exclusion and environmental degradation.
- Enabling bottom-up actor-coalitions and ‘opening up’ policy space and different views on problems and solutions

The politics of transformation

- Pluralization of epistemologies and sustainabilities
 - How local actors (including us as Nitlapan and FDL) perceive the local dynamics and its consequences?
 - How we all position ourselves within this dynamics?
 - To what extent alternative visions are there in the territory?
- Politicization of transformation:
 - How does the relationship with FDL-Nitlapan constrain and enable us?
 - How transformative is this entry point?

Where we are in the work plan

WP1: Characterization of the current and alternative development pathways in the study region

- iterative gathering of local actors on historical emergence and territorial dynamics

WP3: Citizen science climate data generation for local production strategies

- Installation of weather stations and related analysis of weather patterns and links with productive practices.

WP2: Assessment of the role of finance in current development pathways

- Historical analysis of FDL portfolio

WP4: Co)generation of actionable knowledge for transformation to sustainable development pathways

- Inception of collective reflection processes



Challenges

- Two subsequent crises have impacted the feasibility and logical planning of activities.
 - Socio-Political crisis April 2018
 - Covid-19 pandemic March 2020
- Permanent need to re-articulate the logic of the project.
 - Parallel process of research and actions
 - Discussions with different actors at different levels
- Tensions between;
 - The impact claims of the project vs the complexity, long term, non-centrality of research within the real world T2S processes
 - deliberative/facilitating role and deliberate (political) intervention based on values/ideas about T2S