

TruePATH

Transforming Unsustainable Pathways in Agricultural Frontiers



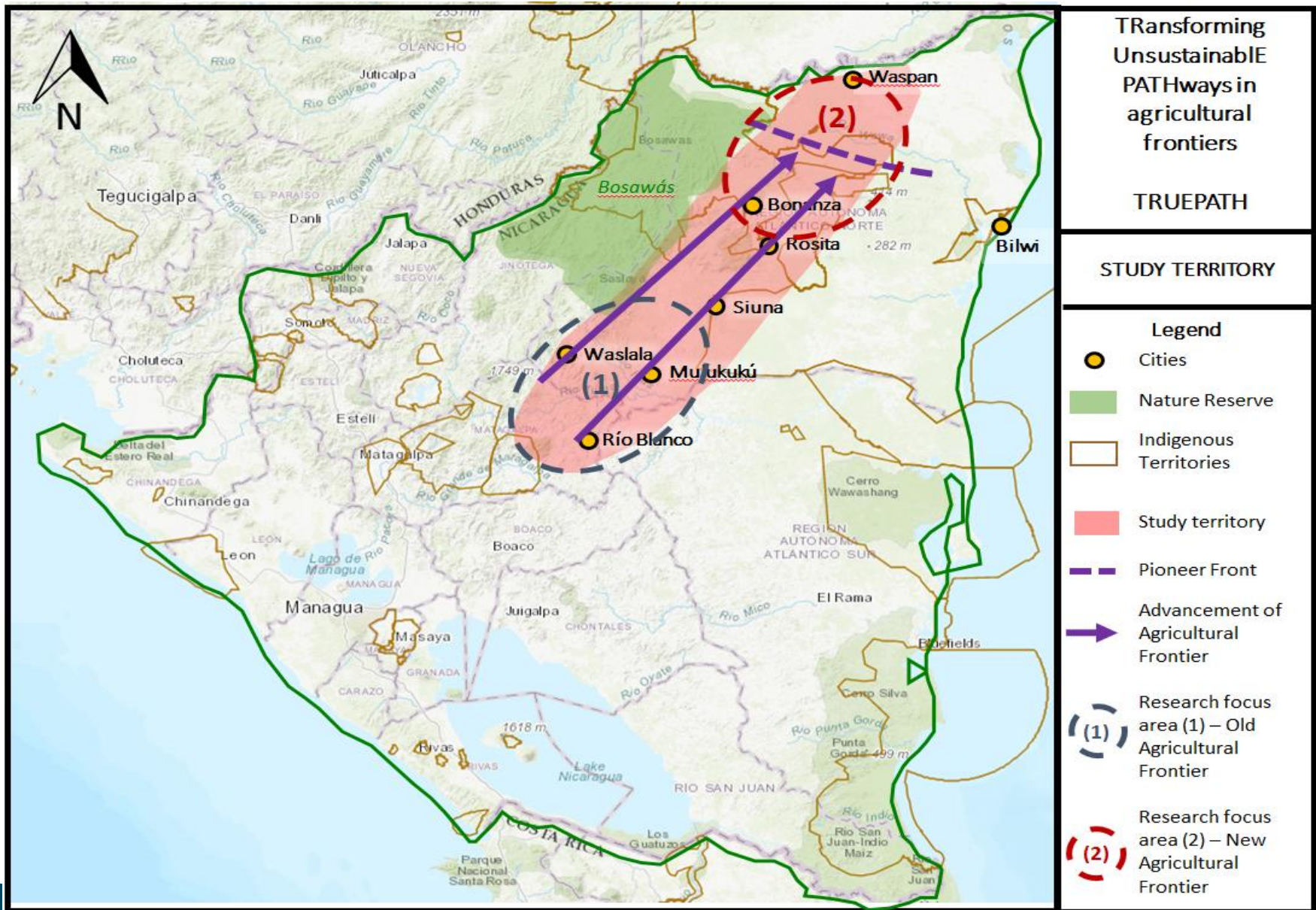
TRUEPATH: TRansforming Unsustainable PATHways in agricultural frontiers: articulating microfinance plus with local institutional change for sustainability in Nicaragua



NORFACE
NETWORK



Context and Research site



Transforming Unsustainable PATHways in agricultural frontiers

TRUEPATH

STUDY TERRITORY

Legend

- Cities
- Nature Reserve
- Indigenous Territories
- Study territory
- Pioneer Front
- Advancement of Agricultural Frontier
- Research focus area (1) – Old Agricultural Frontier
- Research focus area (2) – New Agricultural Frontier

Objective

Through an **action-research** study in Nicaragua, we want to

- **Co-generate actionable knowledge** for the transformation of **unsustainable cattle-based development** in agricultural frontiers in Latin America and elsewhere.
- **Promote institutional change** towards social-ecological sustainability, by exploiting the potential of **'Green Microfinance Plus'**.

Where we currently stand

WP1: Characterization of the current and alternative development pathways in the study region (RQ 1a)

- Historical Analysis of the territory
- 6 Case studies

WP2: Assessment of the role of finance in current development pathways (RQ 1b)

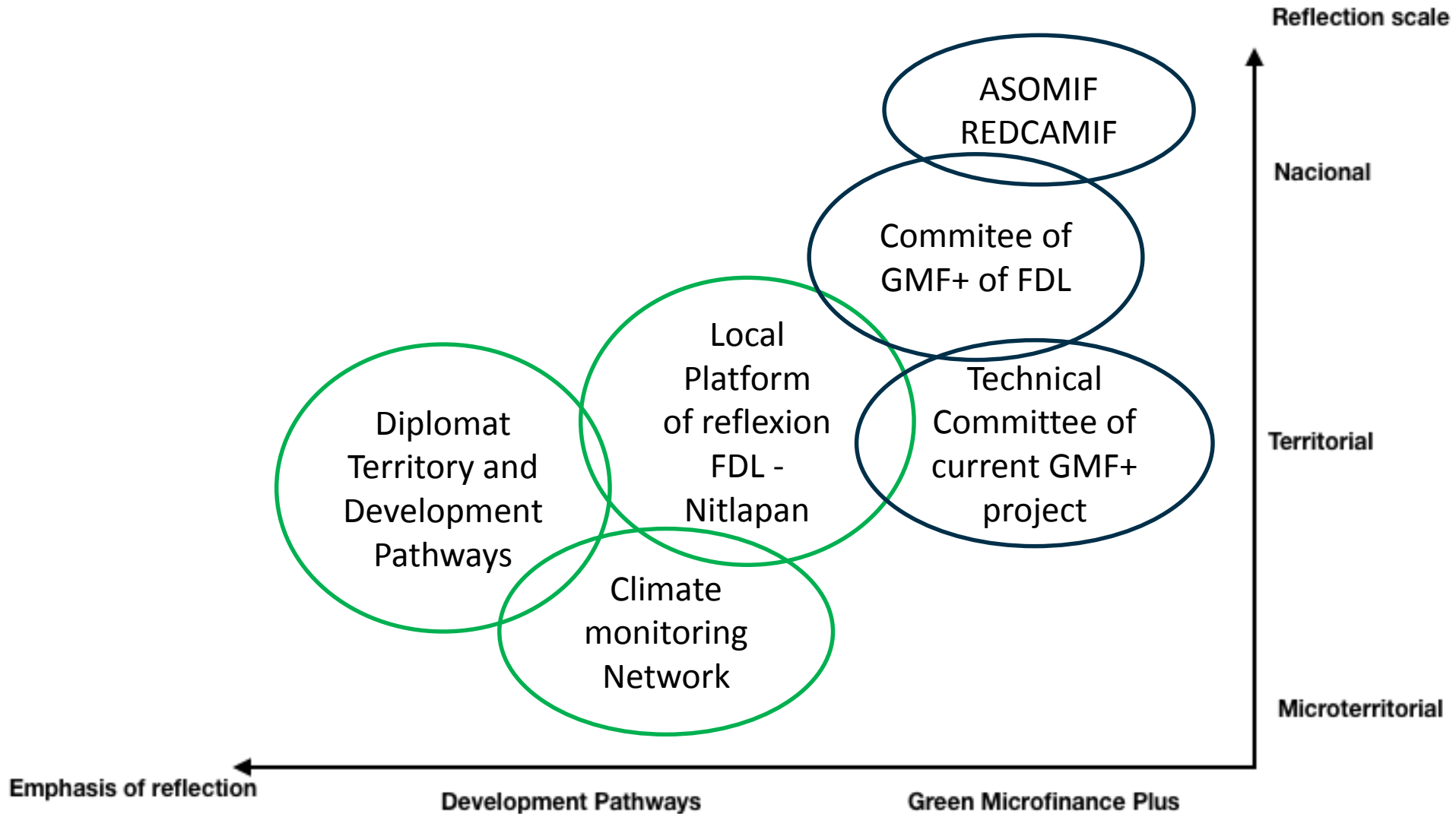
- Analysis of FDL portfolio in the study area from 2008-2017
- Follow-up of 'model farms' of FDL-Nitlapan Green Microfinance Plus current Project.
- First meetings with local stakeholders 'what is a successful client/farmer'

WP3: Citizen science climate data generation for local production strategies (RQ 1c)

- Installed 6 weather stations
- Two reflection sessions with climate observers

WP4: (Co)generation of actionable knowledge for transformation to sustainable development pathways (RQ 2a,b)

multi-scalar, multi-stakeholder platforms



Challenges

- Limited characterization of stakeholders: worldviews, power, networks
- Contradictions / inconsistencies between strategic vision and actions
- Different speeds at different research sites: Old and New Agricultural frontier
- Engaging with governmental policy makers - Political crisis in Nicaragua
- Participation, ownership, legitimacy of the processes



IOB
Institute of Development Policy
University of Antwerp